



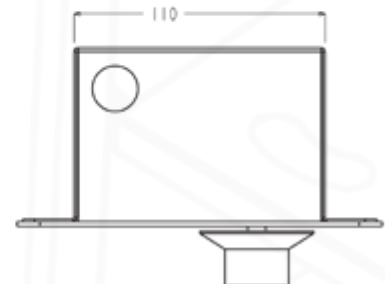
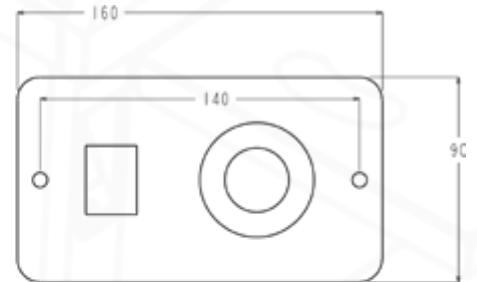
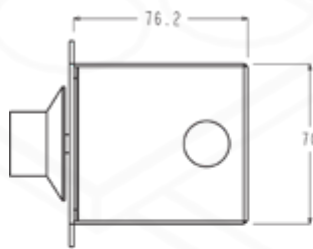
Overview

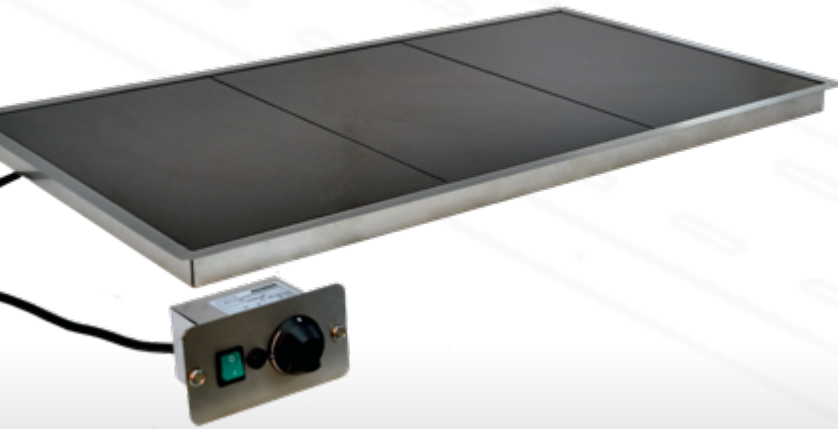
The economical solution for hot buffet service.

In-Counter Neo-Ceram glass hot tops are designed to display and maintain cooked food temperatures. They are not induction type units which require dedicated food pans, and with the exception of cast iron can be used with any suitable heatproof food container. Chafing dishes are not required. In-counter Versitop's are manufactured from 1/1GN size black ceramic glass heating panels. Any shape of heatproof dish can be placed on the panels. All units are supplied with a remote-control box complete with 10 amp cable and plug. In-counter Versitops are have a 20 mm flange to support the unit. The control box is connected to the underside of the unit by approximately 1.5 metres of cable. A minimum clearance of 30 mm below each unit is required to allow for the cable exit. The control box has an illuminated on/off switch and energy regulated temperature control. The surface temperature of the panels is adjustable to a maximum of 100°C.

Key Features:

- Even temperature across the entire surface area of each panel with no hot spots
- Units supplied with stainless steel flange to facilitate simple installation
- Very low power consumption
- Supplied with a remote-control box containing illuminated on/off switch and temperature control
- Rapid heat up and cool down time
- Can be installed in any type of bench with a suitable cut-out and access to a standard 10-amp power point





Model Code	Number of GN 1/1 Panels	Power Rating (kw)	Weight (kg)
SFD1	1	0.2	8
SFD2	2	0.4	13
SFD3	3	0.6	18
SFD4	4	0.8	23
SFD5	5	1.0	28

